

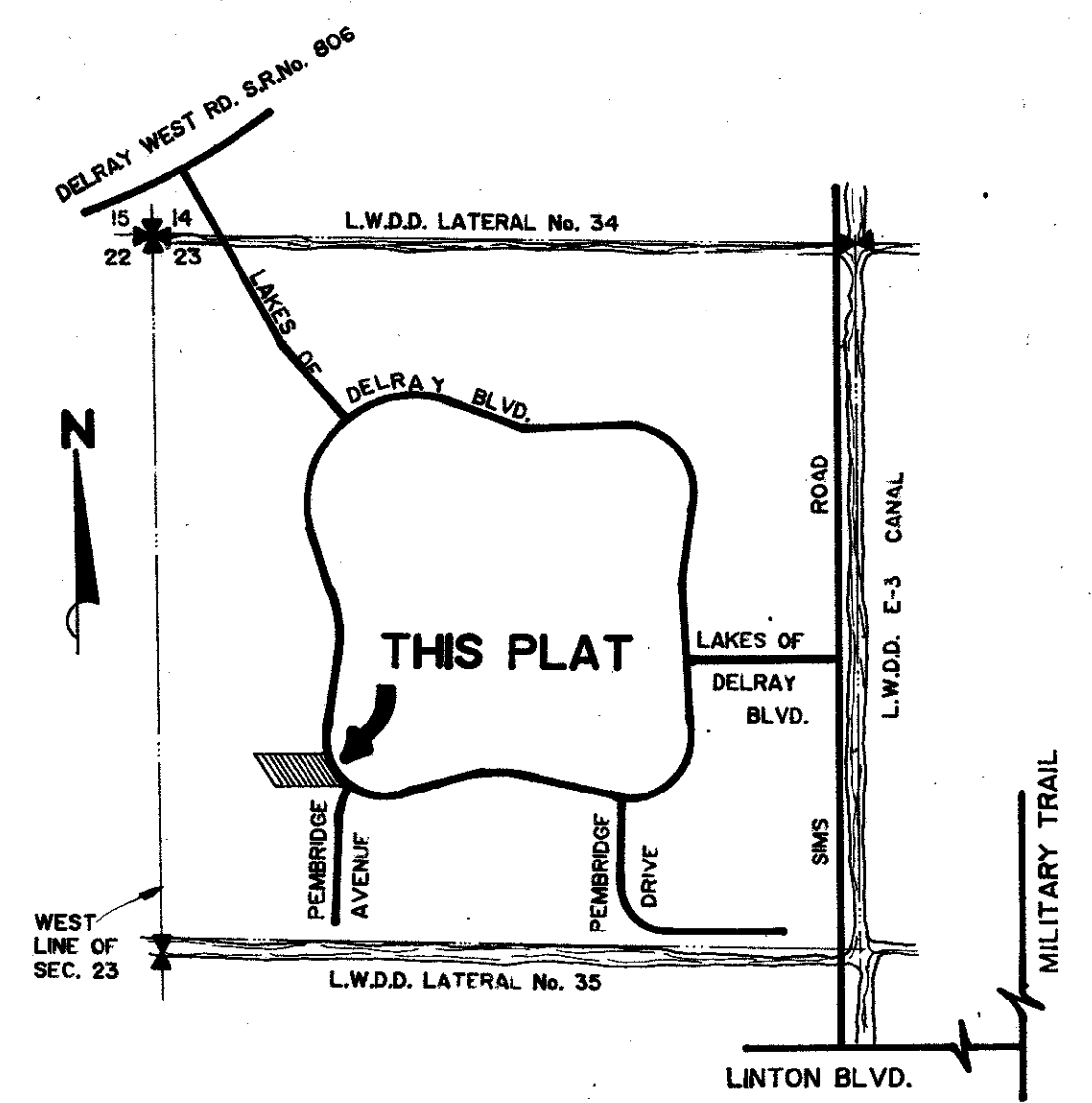
THIS INSTRUMENT PREPARED BY  
LARRY BIRMINGHAM OF  
DANIEL CARNAHAN  
CONSULTING ENGINEERS, INC.  
6191 W. ATLANTIC BLVD., MARGATE, FLA.  
SEPT., 1987 8706009-B S.W.

# RECREATION AREA NO. 2A LAKES OF DELRAY

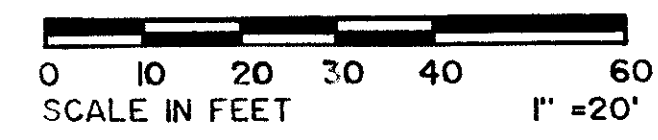
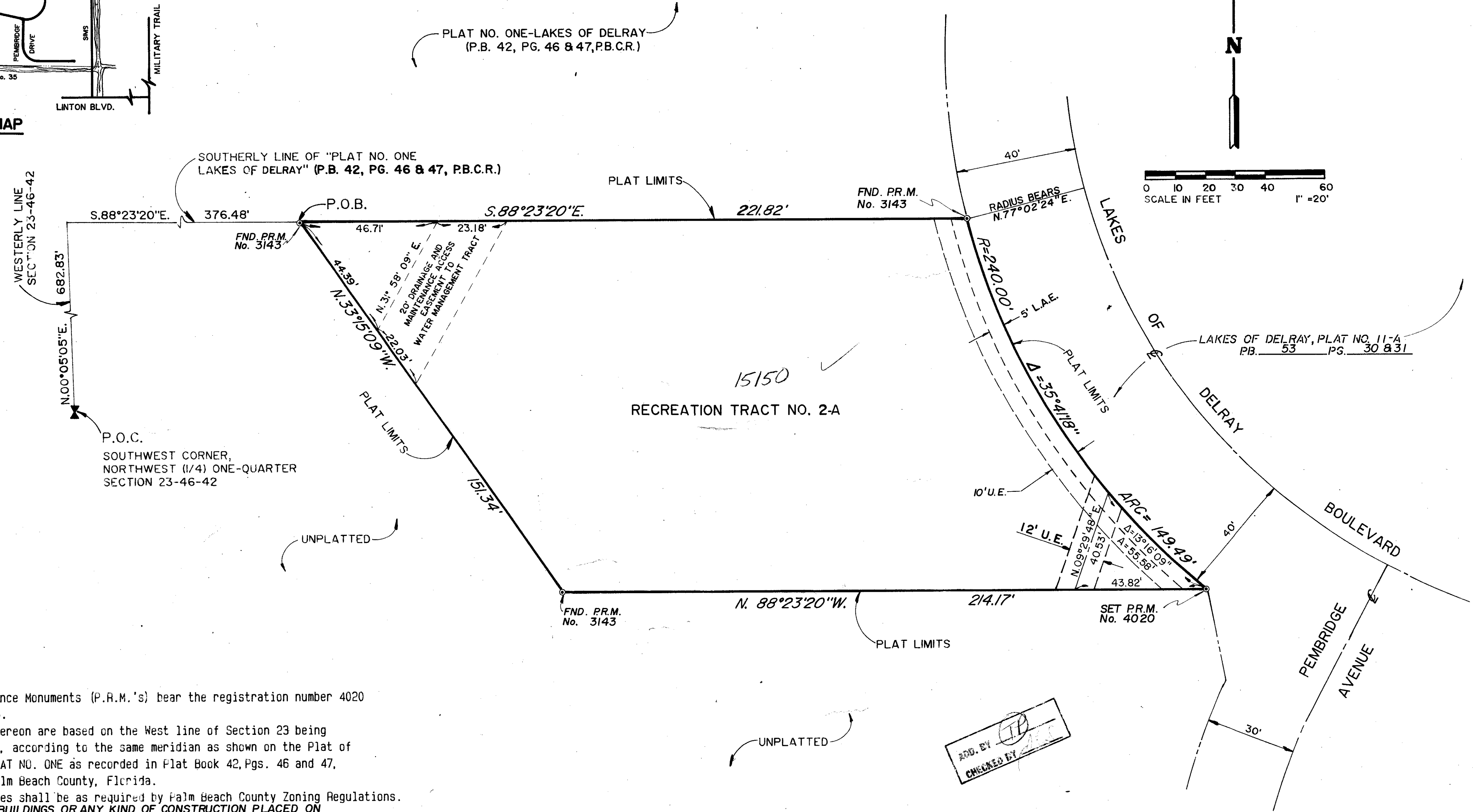
BEING A PORTION OF THE NORTHWEST ONE - QUARTER  
OF SECTION 23, TOWNSHIP 46 SOUTH, RANGE 42 EAST  
PALM BEACH COUNTY, FLORIDA.

STATE OF FLORIDA }  
COUNTY OF PALM BEACH } S.S.  
THIS PLAT WAS FILED FOR  
RECORD AT \_\_\_\_\_, THIS \_\_\_\_\_  
DAY OF \_\_\_\_\_, 1989, A.D.,  
AND DULY RECORDED IN PLAT BOOK  
No. \_\_\_\_\_ ON PAGES  
AND \_\_\_\_\_  
JOHN B. DUNKLE, CLERK  
BY: \_\_\_\_\_, D.C.

SHEET 2 OF 2 SHEETS



LOCATION MAP  
N.T.S.



### GENERAL NOTES

1. All Permanent Reference Monuments (P.R.M.'s) bear the registration number 4020 and are shown thus ⊙.
2. The bearings shown hereon are based on the West line of Section 23 being North 00°05'05" East, according to the same meridian as shown on the Plat of LAKES OF DELRAY - PLAT NO. ONE as recorded in Plat Book 42, Pgs. 46 and 47, Public Records of Palm Beach County, Florida.
3. building setback lines shall be as required by Palm Beach County Zoning Regulations.
4. THERE SHALL BE NO BUILDINGS OR ANY KIND OF CONSTRUCTION PLACED ON UTILITY OR DRAINAGE EASEMENTS, CONSTRUCTION OR LANDSCAPING UPON MAINTENANCE OR MAINTENANCE ACCESS EASEMENTS MUST BE IN CONFORMANCE WITH ORDINANCES OF PALM BEACH COUNTY.
5. THERE SHALL BE NO TREES OR SHRUBS PLACED ON UTILITY EASEMENTS WHICH ARE PROVIDED FOR WATER AND SEWER USE OR UPON DRAINAGE EASEMENTS.
6. LANDSCAPING ON OTHER UTILITY EASEMENTS SHALL BE ALLOWED ONLY AFTER CONSENT OF ALL UTILITY COMPANIES OCCUPYING SAME.
7. IN THOSE CASES WHERE EASEMENTS OF DIFFERENT TYPES CROSS, DRAINAGE EASEMENTS SHALL HAVE FIRST PRIORITY, UTILITY EASEMENTS SHALL HAVE SECOND PRIORITY, ACCESS EASEMENTS SHALL HAVE THIRD PRIORITY, AND ALL OTHER EASEMENTS SHALL BE SUBORDINATE TO THESE WITH THEIR PRIORITIES BEING DETERMINED BY THE USE RIGHTS GRANTED.
8. D.E. INDICATES DRAINAGE EASEMENT.
9. U.E. INDICATES UTILITY EASEMENT.
10. L.A.E. INDICATES LIMITED ACCESS EASEMENT.
11. ALL DRAINAGE EASEMENTS ARE 12' WIDE UNLESS OTHERWISE NOTED
12. NOTICE: THERE MAY BE ADDITIONAL RESTRICTIONS THAT ARE NOT RECORDED ON THIS PLAT, THAT MAY BE FOUND IN THE PUBLIC RECORDS OF THIS COUNTY.

APD. BY  
CHECKED BY

*K. Hall*

0267-008

RECREATION AREA No. 2A, LAKES OF DELRAY 63/55

Recreation Area 2a  
SUBDIVISION # Lakes of Delray  
PAGE 55  
BOOK 63 FLOOD MAP # 0008  
FLOOD ZONE B ZONING RM  
QUAD # 11 ZIP CODE 33468  
SE 22/112  
FUD NAME T02470